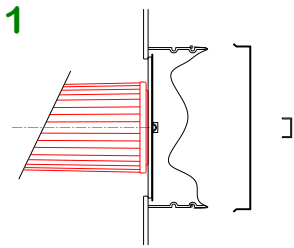
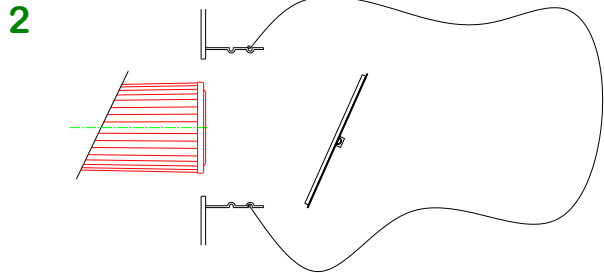


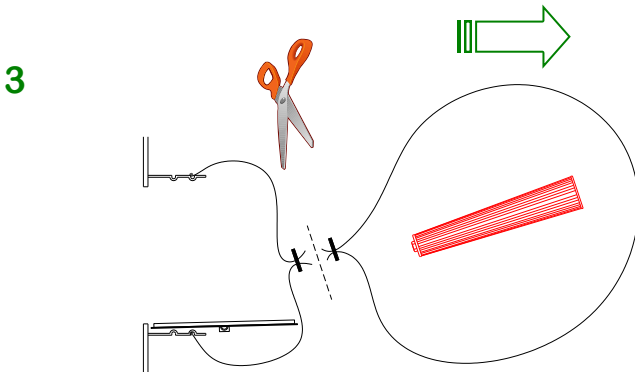
'Safe Change' Principle



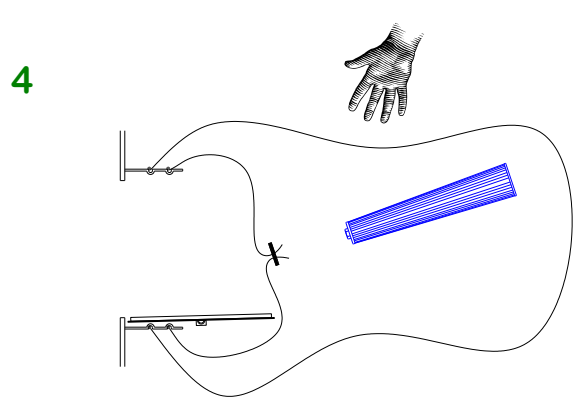
Remove retaining bar
& end cover.



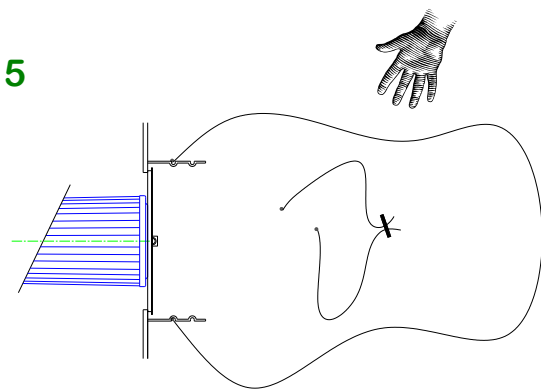
Pull out disposable bag
& remove end cap



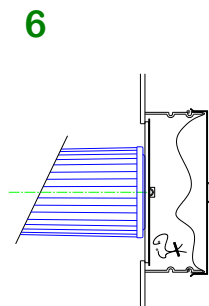
Remove filter cartridge & double tie bag.
Cut between ties & discard dirty cartridge.
Ensure end cap is positioned as shown.



Introduce new cartridge
in new bag.



Remove end of original bag.
Loosely position end cap.



Remove all air from bag &
push into spigot.
Fully tighten end cap.
Pull bag back to outer swage
position.
Replace end cover & retaining
bar.